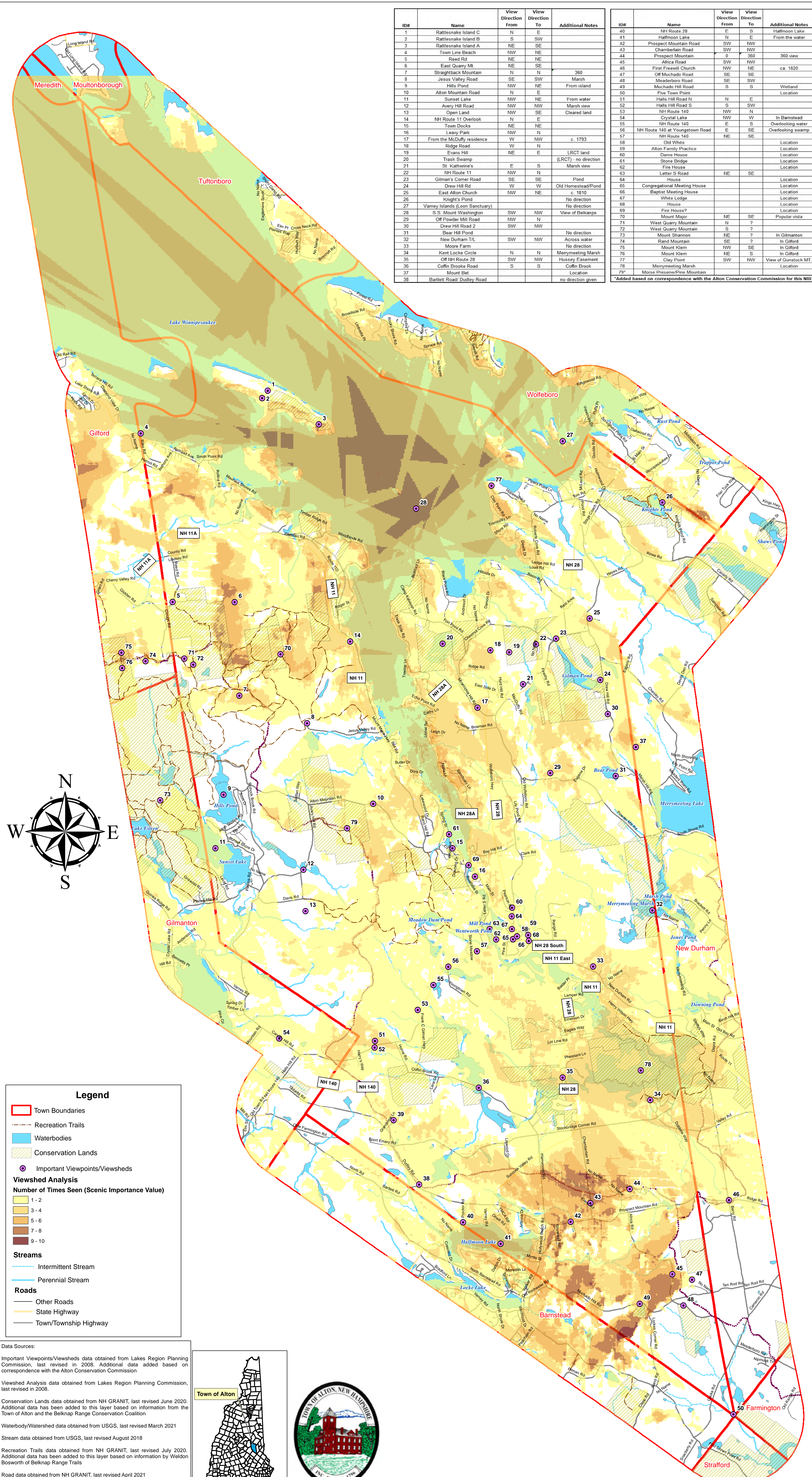


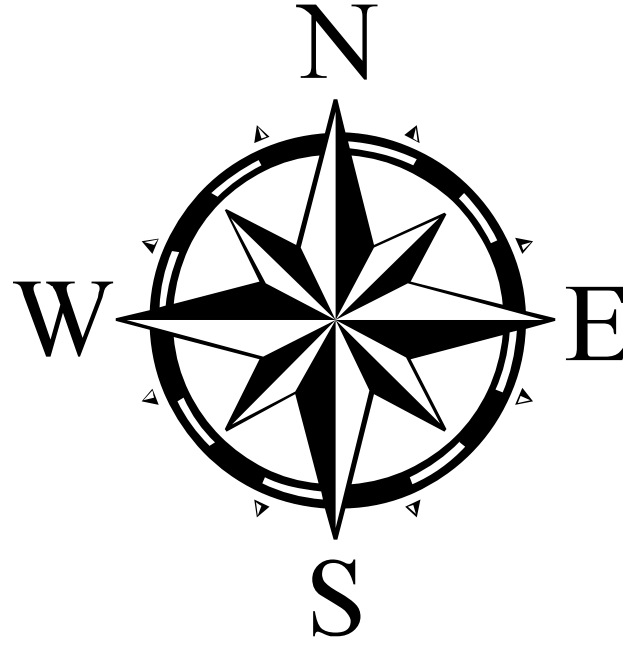
# Alton Scenic Resources



ID#	Name	View Direction From	View Direction To	Additional Notes
1	Rattlesnake Island C	N	E	
2	Rattlesnake Island B	S	SW	
3	Rattlesnake Island A	NE	SE	
4	Town Line Beach	NW	NE	
5	Reed Rd	NE	NE	
6	East Quarry Mt	NE	SE	
7	Straightback Mountain	N	N	360
8	Jesus Valley Road	SE	SW	Marsh
9	Hills Pond	NW	NE	From island
10	Alton Mountain Road	N	E	
11	Sunset Lake	NW	NE	From water
12	Awery Hill Road	NW	NW	Marsh view
13	Open Land	NW	SE	Cleared land
14	NH Route 11 Overlook	N	E	
15	Town Docks	NE	NE	
16	Leavy Park	NW	N	
17	From the McDuffy residence	W	NW	c. 1793
18	Ridge Road	W	N	
19	Evans Hill	NE	E	LRCT land
20	Trask Swamp			(LRCT) - no direction
21	St. Katherine's	E	S	Marsh view
22	NH Route 11	NW	NW	
23	Gilman's Corner Road	SE	SE	Pond
24	Drew Hill Rd	W	W	Old Homestead/Pond
25	East Alton Church	NW	NE	c. 1810
26				No direction
27	Varney Islands (Loon Sanctuary)			No direction
28	S S Mount Washington	SW	NW	View of Belknap
29	Off Powder Mill Road	NW	N	
30	Drew Hill Road 2	SW	NW	
31				No direction
32	New Durham T/L	SW	NW	Across water
33	Moore Farm			No direction
34	Kent Locke Circle	N	N	Merrymeeting Marsh
35	Off NH Route 28	SW	NW	Hussey Easement
36	Coffin Brooke Road	S	S	Coffin Brook
37	Mount Bet			Location
38	Bartlett Road/ Dudley Road			no direction given

ID#	Name	View Direction From	View Direction To	Additional Notes
40	NH Route 28	E	S	Halfmoon Lake
41	Halfmoon Lake	N	E	From the water
42	Prospect Mountain Road	SW	NW	
43	Chamberlain Road	SW	NW	
44	Prospect Mountain	0	360	360 view
45	Africa Road	SW	NW	
46	First Freeville Church	NW	NE	ca. 1820
47	Off Muchado Road	SE	SE	
48	Meadorboro Road	SE	SW	
49	Muchado Hill Road	S	S	Wetland
50	Five Town Point			Location
51	Halls Hill Road N	N	E	
52	Halls Hill Road S	S	SW	
53	NH Route 140	NW	N	
54	Crystal Lake	NW	W	In Barnstead
55	NH Route 140	E	S	Overlooking water
56	NH Route 140 at Youngstown Road	E	SE	Overlooking swamp
57	NH Route 140	NE	SE	
58	Old White			Location
59	Alton Family Practice			Location
60	Dame House			Location
61	Stone Bridge			Location
62	Fire House			Location
63	Letter S Road	NE	SE	Location
64	House			Location
65	Congregational Meeting House			Location
66	Baptist Meeting House			Location
67	White Lodge			Location
68	House			Location
69	Fire House?			Location
70	Mount Major	NE	SE	Popular vista
71	West Quarry Mountain	N	?	
72	West Quarry Mountain	S	?	
73	Mount Shannon	NE	?	In Gilmanton
74	Rand Mountain	SE	?	In Gilford
75	Mount Klem	NW	SE	In Gilford
76	Mount Klem	NE	S	In Gilford
77	Clay Point	SW	NW	View of Gunstock MT.
78	Merrymeeting Marsh			Location
79	Morse Preserve/Pine Mountain			Location

\*Added based on correspondence with the Alton Conservation Commission for this NRI



### Legend

- Town Boundaries
- Recreation Trails
- Waterbodies
- Conservation Lands
- Important Viewpoints/Viewsheds

### Viewshed Analysis

Number of Times Seen (Scenic Importance Value)

- 1 - 2
- 3 - 4
- 5 - 6
- 7 - 8
- 9 - 10

### Streams

- Intermittent Stream
- Perennial Stream

### Roads

- Other Roads
- State Highway
- Town/Township Highway

Data Sources:

Important Viewpoints/Viewsheds data obtained from Lakes Region Planning Commission, last revised in 2008. Additional data added based on correspondence with the Alton Conservation Commission

Viewshed Analysis data obtained from Lakes Region Planning Commission, last revised in 2008.

Conservation Lands data obtained from NH GRANIT, last revised June 2020. Additional data has been added to this layer based on information from the Town of Alton and the Belknap Range Conservation Coalition

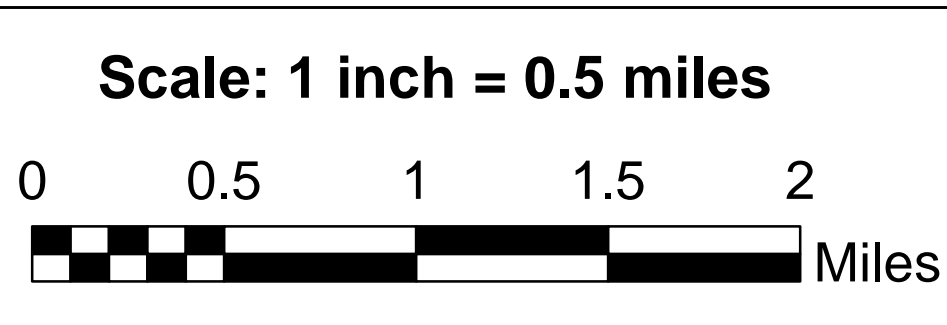
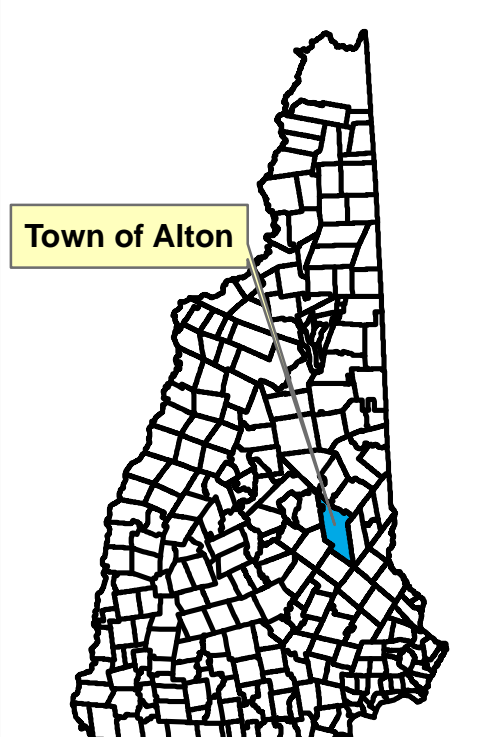
Waterbody/Watershed data obtained from USGS, last revised March 2021

Stream data obtained from USGS, last revised August 2018

Recreation Trails data obtained from NH GRANIT, last revised July 2020. Additional data has been added to this layer based on information by Weldon Bosworth of Belknap Range Trails

Road data obtained from NH GRANIT, last revised April 2021

Town boundary data obtained from NH GRANIT, last revised April 2013



Alton Scenic Resources NRI Map  
 Created: September 28, 2021  
 Last revised: October 6, 2022

Stoney Ridge Environmental, LLC  
 8 Kiana Road  
 Alton, NH 03809  
 Phone: 603-776-5825



Prepared for the Town of Alton, NH  
 This map should only be used for planning purposes,  
 not for legal bound interpretation.